

Cuadro 1. Coberturas de vacunación por Región Sanitaria según biológico y dosis

Paraguay, 31 de Diciembre 2017 - 20 de Octubre de 2018

Cobertura ideal para el periodo: 81 %

Semana N° 42

| N° | Regiones Sanitarias | Pop. | Menores de 1 año | | | | | | | | | | | | | | | | | | | | | | | |
|------|---------------------|---------|------------------|----|--------|----|--------|----|--------|----|------------|----|--------|----|--------|----|--------|----|------------|----|--------|----|--------|----|--|--|
| | | | 1ra. Dosis | | | | | | | | 2da. Dosis | | | | | | | | 3ra. Dosis | | | | | | | |
| | | | Hb-Ped | % | BCG | % | IPV | % | Rota | % | Penta | % | PCV13 | % | Rota | % | Penta | % | PCV13 | % | b-OPV | % | Penta | % | | |
| 1 | Concepción | 5.893 | 3.645 | 62 | 3.700 | 63 | 3.709 | 63 | 3.714 | 63 | 3.725 | 63 | 3.260 | 55 | 3.612 | 61 | 3.650 | 62 | 3.343 | 57 | 3.056 | 52 | 3.373 | 57 | | |
| 2.1 | San Pedro N. | 4.497 | 2.830 | 63 | 3.108 | 69 | 3.046 | 68 | 3.037 | 68 | 3.046 | 68 | 3.068 | 68 | 2.916 | 65 | 2.932 | 65 | 3.149 | 70 | 2.777 | 62 | 2.779 | 62 | | |
| 2.2 | San Pedro S. | 5.091 | 2.197 | 43 | 2.448 | 48 | 2.743 | 54 | 2.728 | 54 | 2.746 | 54 | 2.751 | 54 | 2.621 | 51 | 2.625 | 52 | 2.751 | 54 | 2.444 | 48 | 2.469 | 48 | | |
| 3 | Cordillera | 5.963 | 3.286 | 55 | 3.326 | 56 | 3.699 | 62 | 3.698 | 62 | 3.694 | 62 | 3.514 | 59 | 3.595 | 60 | 3.661 | 61 | 3.725 | 62 | 3.631 | 61 | 3.632 | 61 | | |
| 4 | Guairá | 4.375 | 2.190 | 50 | 2.302 | 53 | 2.321 | 53 | 2.331 | 53 | 2.330 | 53 | 2.332 | 53 | 2.250 | 51 | 2.265 | 52 | 2.385 | 55 | 2.137 | 49 | 2.246 | 51 | | |
| 5 | Caaguazú | 11.795 | 6.520 | 55 | 7.012 | 59 | 7.000 | 59 | 6.970 | 59 | 6.997 | 59 | 7.063 | 60 | 6.915 | 59 | 6.935 | 59 | 7.629 | 65 | 6.144 | 52 | 6.658 | 56 | | |
| 6 | Caazapá | 4.360 | 1.933 | 44 | 2.095 | 48 | 2.072 | 48 | 2.072 | 48 | 2.073 | 48 | 2.081 | 48 | 2.059 | 47 | 2.060 | 47 | 2.275 | 52 | 1.927 | 44 | 2.018 | 46 | | |
| 7 | Itapúa | 12.602 | 6.206 | 49 | 6.507 | 52 | 6.533 | 52 | 6.516 | 52 | 6.543 | 52 | 6.942 | 55 | 6.411 | 51 | 6.451 | 51 | 6.666 | 53 | 6.152 | 49 | 6.565 | 52 | | |
| 8 | Misiones | 2.453 | 1.486 | 61 | 1.493 | 61 | 1.452 | 59 | 1.452 | 59 | 1.451 | 59 | 1.453 | 59 | 1.432 | 58 | 1.432 | 58 | 1.588 | 65 | 1.444 | 59 | 1.444 | 59 | | |
| 9 | Paraguarí | 4.538 | 2.306 | 51 | 2.402 | 53 | 2.425 | 53 | 2.425 | 53 | 2.427 | 53 | 2.431 | 54 | 2.361 | 52 | 2.362 | 52 | 2.657 | 59 | 2.329 | 51 | 2.330 | 51 | | |
| 10 | Alto Paraná | 16.650 | 12.455 | 75 | 12.687 | 76 | 12.221 | 73 | 12.144 | 73 | 11.994 | 72 | 11.659 | 70 | 11.542 | 69 | 11.308 | 68 | 11.508 | 69 | 9.379 | 56 | 10.012 | 60 | | |
| 11 | Central | 41.108 | 28.377 | 69 | 28.560 | 69 | 27.360 | 67 | 27.546 | 67 | 26.468 | 64 | 25.036 | 61 | 26.657 | 65 | 24.951 | 61 | 25.555 | 62 | 23.882 | 58 | 23.798 | 58 | | |
| 12 | Ñeembucú | 1.446 | 855 | 59 | 839 | 58 | 843 | 58 | 842 | 58 | 841 | 58 | 846 | 59 | 822 | 57 | 822 | 57 | 894 | 62 | 814 | 56 | 815 | 56 | | |
| 13 | Amambay | 3.597 | 2.636 | 73 | 2.805 | 78 | 2.743 | 76 | 2.728 | 76 | 2.734 | 76 | 2.560 | 71 | 2.628 | 73 | 2.627 | 73 | 2.640 | 73 | 2.225 | 62 | 2.345 | 65 | | |
| 14 | Canindeyú | 5.071 | 2.634 | 52 | 3.417 | 67 | 3.343 | 66 | 3.274 | 65 | 3.334 | 66 | 3.421 | 67 | 3.218 | 63 | 3.316 | 65 | 3.739 | 74 | 3.197 | 63 | 3.220 | 63 | | |
| 15 | Pte. Hayes | 2.862 | 1.496 | 52 | 1.873 | 65 | 1.964 | 69 | 1.956 | 68 | 1.969 | 69 | 1.951 | 68 | 1.853 | 65 | 1.872 | 65 | 1.945 | 68 | 1.674 | 58 | 1.732 | 61 | | |
| 16 | Boquerón | 1.455 | 1.133 | 78 | 1.289 | 89 | 1.238 | 85 | 1.229 | 84 | 1.235 | 85 | 1.154 | 79 | 1.061 | 73 | 1.074 | 74 | 1.030 | 71 | 960 | 66 | 1.051 | 72 | | |
| 17 | Alto Py | 412 | 255 | 62 | 282 | 68 | 338 | 82 | 337 | 82 | 333 | 81 | 312 | 76 | 337 | 82 | 334 | 81 | 313 | 76 | 324 | 79 | 323 | 78 | | |
| 18 | Capital | 7.673 | 6.661 | 87 | 6.748 | 88 | 6.324 | 82 | 6.488 | 85 | 6.288 | 82 | 5.937 | 77 | 6.390 | 83 | 6.151 | 80 | 6.164 | 80 | 5.857 | 76 | 5.928 | 77 | | |
| País | | 141.841 | 89.101 | 63 | 92.893 | 65 | 91.374 | 64 | 91.487 | 64 | 90.228 | 64 | 87.771 | 62 | 88.680 | 63 | 86.828 | 61 | 89.956 | 63 | 80.353 | 57 | 82.738 | 58 | | |

Obs: La XIV R.S Canindeyú no reportó datos en esta semana.

Fuente: Datos reportados al PAI-Visual - Sub-Sistema de Información de Coberturas del PAI

Fecha de Emisión: 24/10/2018

Hora: 14:15

Cuadro 1. Coberturas de vacunación por Región Sanitaria según biológico y dosis

Paraguay, 31 de Diciembre 2017 - 20 de Octubre de 2018

Cobertura ideal para el periodo: 81 %

Semana N° 42

| N° | Regiones Sanitarias | 1 año | | | | | | | | | | | | | | | 4 años | | | | | | |
|------|---------------------|---------|------------|----|---------|----|---------|----|---------|----|--------|----|--------|----|--------|----|---------|---------|----|--------|----|--------|----|
| | | Pob. | 1ra. Dosis | | Reforzo | | | | | | | | | | | | Pob. | Reforzo | | | | | |
| | | | SPR | % | AA | % | PCV13 R | % | b-OPV R | % | DPT R | % | VVZ | % | VHA | % | | DPT | % | b-OPV | % | SPR | % |
| 1 | Concepción | 5.869 | 3.558 | 61 | 3.478 | 59 | 2.968 | 51 | 2.829 | 48 | 3.037 | 52 | 3.302 | 56 | 3.303 | 56 | 5.807 | 3.230 | 56 | 2.972 | 51 | 3.245 | 56 |
| 2.1 | San Pedro N. | 4.486 | 3.257 | 73 | 2.960 | 66 | 3.253 | 73 | 2.588 | 58 | 2.589 | 58 | 2.712 | 60 | 2.713 | 60 | 4.488 | 2.774 | 62 | 2.772 | 62 | 2.775 | 62 |
| 2.2 | San Pedro S. | 5.078 | 2.777 | 55 | 2.660 | 52 | 2.767 | 54 | 2.417 | 48 | 2.424 | 48 | 2.504 | 49 | 2.495 | 49 | 5.080 | 2.541 | 50 | 2.538 | 50 | 2.543 | 50 |
| 3 | Cordillera | 5.902 | 3.926 | 67 | 3.913 | 66 | 3.787 | 64 | 3.665 | 62 | 3.689 | 63 | 3.790 | 64 | 3.791 | 64 | 5.751 | 3.806 | 66 | 3.771 | 66 | 3.800 | 66 |
| 4 | Guairá | 4.371 | 2.488 | 57 | 2.508 | 57 | 2.466 | 56 | 2.018 | 46 | 2.045 | 47 | 2.153 | 49 | 2.129 | 49 | 4.350 | 2.420 | 56 | 2.326 | 53 | 2.432 | 56 |
| 5 | Caaguazú | 11.716 | 7.170 | 61 | 7.088 | 60 | 7.117 | 61 | 5.388 | 46 | 5.701 | 49 | 6.390 | 55 | 6.386 | 55 | 11.669 | 6.120 | 52 | 5.684 | 49 | 6.139 | 53 |
| 6 | Caazapá | 4.348 | 2.214 | 51 | 2.270 | 52 | 2.223 | 51 | 1.905 | 44 | 1.982 | 46 | 2.119 | 49 | 2.106 | 48 | 4.322 | 2.236 | 52 | 2.143 | 50 | 2.237 | 52 |
| 7 | Itapúa | 12.530 | 6.932 | 55 | 6.897 | 55 | 6.920 | 55 | 5.426 | 43 | 5.632 | 45 | 6.214 | 50 | 6.220 | 50 | 12.443 | 6.484 | 52 | 6.208 | 50 | 6.584 | 53 |
| 8 | Misiones | 2.428 | 1.620 | 67 | 1.647 | 68 | 1.620 | 67 | 1.452 | 60 | 1.452 | 60 | 1.462 | 60 | 1.457 | 60 | 2.380 | 1.473 | 62 | 1.473 | 62 | 1.474 | 62 |
| 9 | Paraguari | 4.553 | 2.604 | 57 | 2.603 | 57 | 2.604 | 57 | 2.496 | 55 | 2.496 | 55 | 2.542 | 56 | 2.542 | 56 | 4.628 | 2.773 | 60 | 2.773 | 60 | 2.773 | 60 |
| 10 | Alto Paraná | 16.617 | 11.462 | 69 | 11.626 | 70 | 10.575 | 64 | 7.488 | 45 | 8.005 | 48 | 9.474 | 57 | 9.471 | 57 | 16.597 | 9.532 | 57 | 8.656 | 52 | 9.641 | 58 |
| 11 | Central | 40.814 | 27.449 | 67 | 27.359 | 67 | 24.911 | 61 | 20.417 | 50 | 20.524 | 50 | 23.977 | 59 | 24.013 | 59 | 39.629 | 20.915 | 53 | 20.793 | 52 | 21.240 | 54 |
| 12 | Ñeembucú | 1.453 | 881 | 61 | 850 | 58 | 881 | 61 | 792 | 55 | 793 | 55 | 804 | 55 | 803 | 55 | 1.473 | 930 | 63 | 930 | 63 | 931 | 63 |
| 13 | Amambay | 3.571 | 2.688 | 75 | 2.691 | 75 | 2.468 | 69 | 1.769 | 50 | 1.870 | 52 | 2.320 | 65 | 2.311 | 65 | 3.540 | 1.951 | 55 | 1.840 | 52 | 1.993 | 56 |
| 14 | Canindeyú | 5.042 | 3.495 | 69 | 3.398 | 67 | 3.454 | 69 | 2.710 | 54 | 2.725 | 54 | 3.056 | 61 | 3.055 | 61 | 4.980 | 2.797 | 56 | 2.773 | 56 | 2.801 | 56 |
| 15 | Pte. Hayes | 2.816 | 2.065 | 73 | 2.062 | 73 | 1.981 | 70 | 1.335 | 47 | 1.378 | 49 | 1.765 | 63 | 1.751 | 62 | 2.738 | 1.588 | 58 | 1.549 | 57 | 1.589 | 58 |
| 16 | Boquerón | 1.432 | 1.123 | 78 | 1.139 | 80 | 950 | 66 | 839 | 59 | 872 | 61 | 1.060 | 74 | 1.047 | 73 | 1.386 | 902 | 65 | 907 | 65 | 920 | 66 |
| 17 | Alto Py | 398 | 368 | 92 | 357 | 90 | 363 | 91 | 293 | 74 | 294 | 74 | 339 | 85 | 338 | 85 | 380 | 316 | 83 | 317 | 83 | 307 | 81 |
| 18 | Capital | 7.797 | 6.665 | 85 | 6.577 | 84 | 5.921 | 76 | 4.840 | 62 | 4.883 | 63 | 5.753 | 74 | 5.797 | 74 | 8.430 | 5.098 | 60 | 5.018 | 60 | 5.234 | 62 |
| País | | 141.221 | 92.742 | 66 | 92.083 | 65 | 87.229 | 62 | 70.667 | 50 | 72.391 | 51 | 81.736 | 58 | 81.728 | 58 | 140.071 | 77.886 | 56 | 75.443 | 54 | 78.658 | 56 |

Obs: La XIV R.S Canindeyú no reportó datos en esta semana.

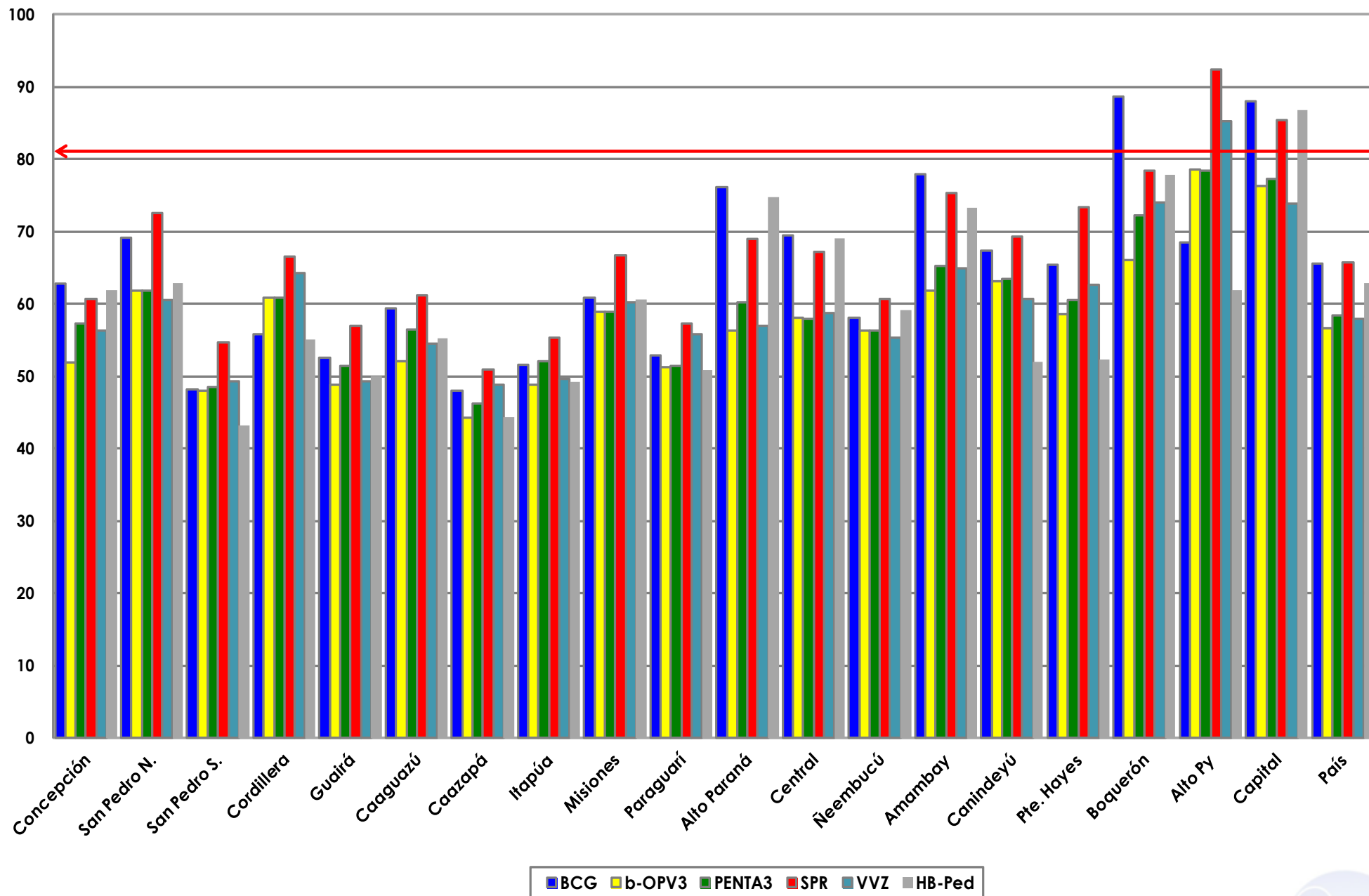
Fecha de Emisión: 24/10/2018

Fuente: Datos reportados al PAI-Visual - Sub-Sistema de Información de Coberturas del PAI

Hora: 14:15

Gráfico 1. Coberturas del programa regular por Región Sanitaria según biológico
Paraguay, 31 diciembre 2017 - 20 de Octubre de 2018

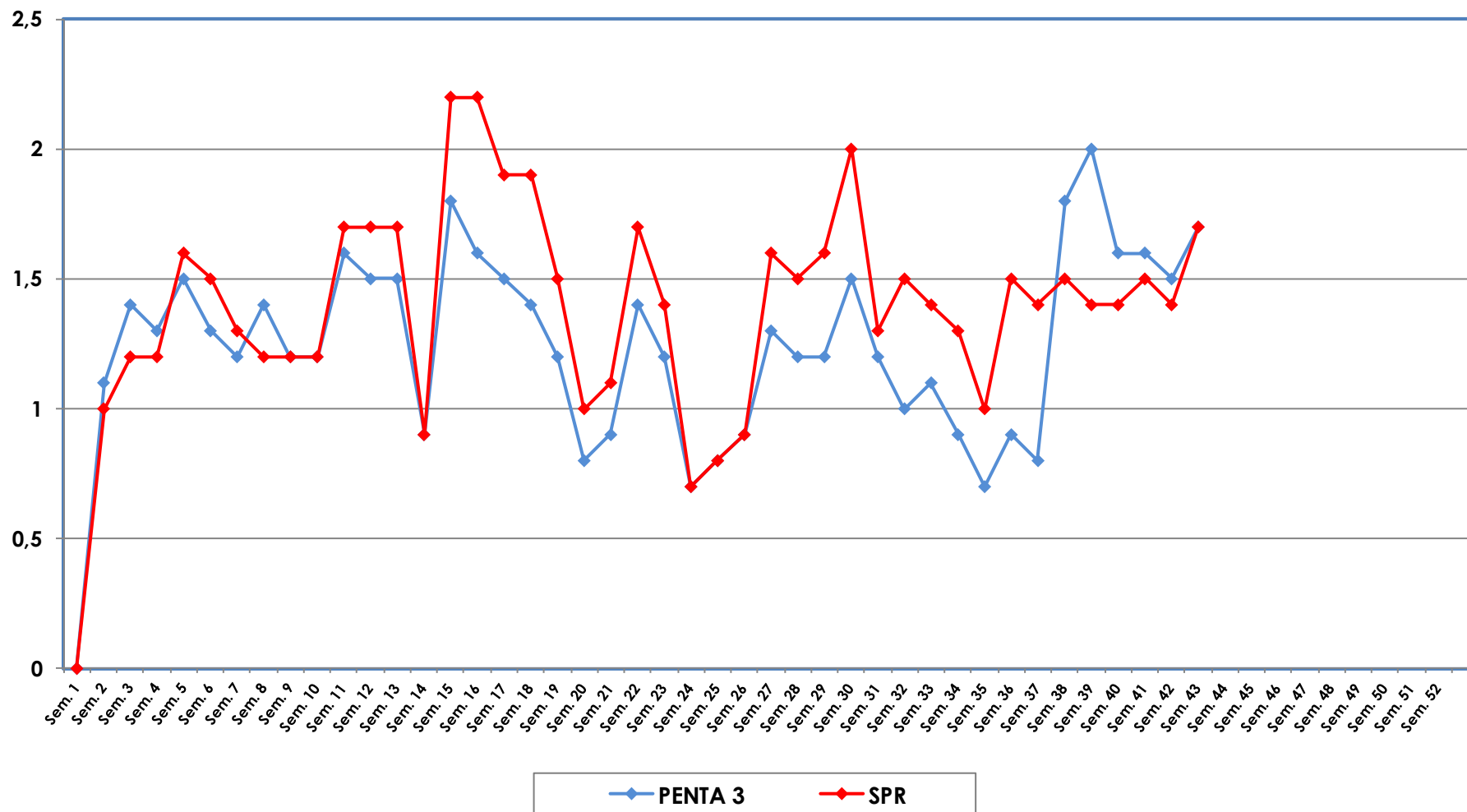
Cobertura ideal para el periodo 81 %



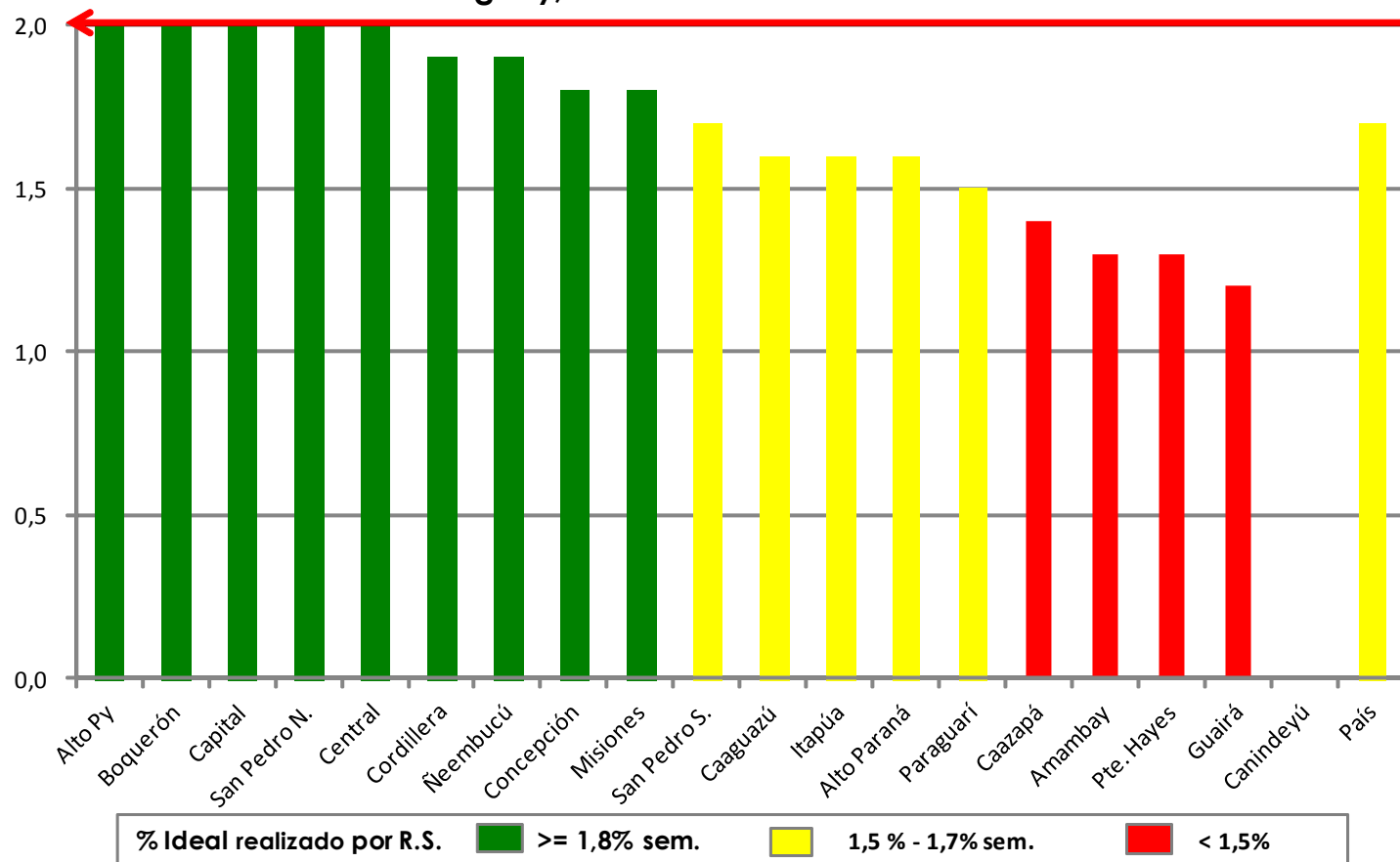
Fuente: Datos reportados al PAI-Visual - Sub-Sistema de Información de Coberturas del PAI



Gráfico 2. Monitoreo semanal de coberturas con Penta3 y SPR Paraguay, hasta la semana 42-2018



**Gráfico 3. Ranking de coberturas con Penta3.
Paraguay, solo de la semana N° 42 - 2018**



Fuente: Datos reportados al PAI-Visual - Sub-Sistema de Información de Coberturas del PAI

