



Cuadro 1. Coberturas de vacunación por Región Sanitaria según biológico y dosis

Paraguay, 31 de Diciembre 2017 - 14 de Abril de 2018

Cobertura ideal para el periodo: 29 %

Semana N° 15

| N° | Regiones Sanitarias | Pob. | Menores de 1 año | | | | | | | | | | | | | | | | | | | | | |
|-----|---------------------|---------|------------------|----|--------|----|--------|----|--------|----|------------|----|--------|----|--------|----|--------|----|------------|----|--------|----|--------|----|
| | | | 1ra. Dosis | | | | | | | | 2da. Dosis | | | | | | | | 3ra. Dosis | | | | | |
| | | | Hb-Ped | % | BCG | % | IPV | % | Rota | % | Penta | % | PCV13 | % | Rota | % | Penta | % | PCV13 | % | b-OPV | % | Penta | % |
| 1 | Concepción | 5.893 | 1.366 | 23 | 1.305 | 22 | 1.278 | 22 | 1.276 | 22 | 1.277 | 22 | 1.245 | 21 | 1.288 | 22 | 1.288 | 22 | 1.524 | 26 | 1.286 | 22 | 1.287 | 22 |
| 2.1 | San Pedro N. | 4.497 | 1.013 | 23 | 1.113 | 25 | 1.075 | 24 | 1.075 | 24 | 1.075 | 24 | 1.096 | 24 | 1.032 | 23 | 1.032 | 23 | 1.244 | 28 | 1.063 | 24 | 1.063 | 24 |
| 2.2 | San Pedro S. | 5.091 | 696 | 14 | 771 | 15 | 880 | 17 | 881 | 17 | 880 | 17 | 888 | 17 | 882 | 17 | 885 | 17 | 1.017 | 20 | 906 | 18 | 909 | 18 |
| 3 | Cordillera | 5.963 | 1.251 | 21 | 1.261 | 21 | 1.331 | 22 | 1.332 | 22 | 1.332 | 22 | 1.329 | 22 | 1.231 | 21 | 1.229 | 21 | 1.532 | 26 | 1.307 | 22 | 1.307 | 22 |
| 4 | Guairá | 4.375 | 801 | 18 | 853 | 19 | 791 | 18 | 790 | 18 | 791 | 18 | 797 | 18 | 742 | 17 | 743 | 17 | 877 | 20 | 810 | 19 | 808 | 18 |
| 5 | Caaguazú | 11.795 | 2.347 | 20 | 2.482 | 21 | 2.438 | 21 | 2.437 | 21 | 2.438 | 21 | 2.527 | 21 | 2.378 | 20 | 2.381 | 20 | 3.087 | 26 | 2.473 | 21 | 2.481 | 21 |
| 6 | Caazapá | 4.360 | 700 | 16 | 758 | 17 | 745 | 17 | 745 | 17 | 745 | 17 | 752 | 17 | 738 | 17 | 738 | 17 | 952 | 22 | 765 | 18 | 765 | 18 |
| 7 | Itapúa | 12.602 | 2.214 | 18 | 2.314 | 18 | 2.193 | 17 | 2.188 | 17 | 2.194 | 17 | 2.586 | 21 | 2.177 | 17 | 2.183 | 17 | 2.321 | 18 | 2.381 | 19 | 2.393 | 19 |
| 8 | Misiones | 2.453 | 498 | 20 | 480 | 20 | 474 | 19 | 473 | 19 | 474 | 19 | 477 | 19 | 479 | 20 | 479 | 20 | 634 | 26 | 564 | 23 | 564 | 23 |
| 9 | Paraguarí | 4.538 | 904 | 20 | 944 | 21 | 811 | 18 | 812 | 18 | 811 | 18 | 823 | 18 | 762 | 17 | 762 | 17 | 1.059 | 23 | 815 | 18 | 816 | 18 |
| 10 | Alto Paraná | 16.650 | 4.445 | 27 | 4.322 | 26 | 4.068 | 24 | 4.067 | 24 | 4.066 | 24 | 4.242 | 25 | 3.986 | 24 | 3.969 | 24 | 4.694 | 28 | 3.765 | 23 | 3.759 | 23 |
| 11 | Central | 41.108 | 10.743 | 26 | 10.688 | 26 | 9.613 | 23 | 9.656 | 23 | 9.608 | 23 | 9.410 | 23 | 9.335 | 23 | 9.281 | 23 | 10.812 | 26 | 9.720 | 24 | 9.750 | 24 |
| 12 | Ñeembucú | 1.446 | 290 | 20 | 287 | 20 | 276 | 19 | 276 | 19 | 276 | 19 | 282 | 20 | 278 | 19 | 278 | 19 | 351 | 24 | 270 | 19 | 270 | 19 |
| 13 | Amambay | 3.597 | 925 | 26 | 997 | 28 | 993 | 28 | 992 | 28 | 991 | 28 | 915 | 25 | 945 | 26 | 947 | 26 | 1.065 | 30 | 919 | 26 | 919 | 26 |
| 14 | Canindeyú | 5.071 | 939 | 19 | 1.239 | 24 | 1.131 | 22 | 1.124 | 22 | 1.132 | 22 | 1.091 | 22 | 1.148 | 23 | 1.153 | 23 | 1.374 | 27 | 1.287 | 25 | 1.288 | 25 |
| 15 | Pte. Hayes | 2.862 | 551 | 19 | 657 | 23 | 639 | 22 | 652 | 23 | 641 | 22 | 653 | 23 | 628 | 22 | 639 | 22 | 711 | 25 | 563 | 20 | 607 | 21 |
| 16 | Boquerón | 1.455 | 384 | 26 | 410 | 28 | 402 | 28 | 390 | 27 | 389 | 27 | 442 | 30 | 336 | 23 | 334 | 23 | 398 | 27 | 357 | 25 | 363 | 25 |
| 17 | Alto Py | 412 | 97 | 24 | 104 | 25 | 110 | 27 | 110 | 27 | 110 | 27 | 109 | 26 | 100 | 24 | 99 | 24 | 111 | 27 | 121 | 29 | 122 | 30 |
| 18 | Capital | 7.673 | 2.489 | 32 | 2.554 | 33 | 2.303 | 30 | 2.399 | 31 | 2.296 | 30 | 2.321 | 30 | 2.301 | 30 | 2.178 | 28 | 2.487 | 32 | 2.182 | 28 | 2.228 | 29 |
| | País | 141.841 | 32.653 | 23 | 33.539 | 24 | 31.551 | 22 | 31.675 | 22 | 31.526 | 22 | 31.985 | 23 | 30.766 | 22 | 30.598 | 22 | 36.250 | 26 | 31.554 | 22 | 31.699 | 22 |

Fecha de Emisión: 18/04/2018

Hora: 18:20

Cuadro 1. Coberturas de vacunación por Región Sanitaria según biológico y dosis

Paraguay, 31 de Diciembre 2017 - 14 de Abril de 2018

Cobertura ideal para el periodo: 29 %

Semana N° 15

| N° | Regiones Sanitarias | 1 año | | | | | | | | | | | | | | | 4 años | | | | | | |
|------|---------------------|---------|------------|----|--------|----|---------|----|---------|----|--------|----|--------|----|--------|----------|---------|--------|----|--------|----|--------|----|
| | | Pob. | 1ra. Dosis | | | | | | | | | | | | Pob. | Refuerzo | | | | | | | |
| | | | SPR | % | AA | % | PCV13 R | % | b-OPV R | % | DPT R | % | VVZ | % | | VHA | % | DPT | % | b-OPV | % | SPR | % |
| 1 | Concepción | 5.869 | 1.261 | 21 | 1.293 | 22 | 1.167 | 20 | 1.109 | 19 | 1.109 | 19 | 1.052 | 18 | 1.050 | 18 | 5.807 | 1.157 | 20 | 1.157 | 20 | 1.157 | 20 |
| 2.1 | San Pedro N. | 4.486 | 1.162 | 26 | 1.055 | 24 | 1.161 | 26 | 861 | 19 | 861 | 19 | 870 | 19 | 870 | 19 | 4.488 | 932 | 21 | 932 | 21 | 932 | 21 |
| 2.2 | San Pedro S. | 5.078 | 1.006 | 20 | 846 | 17 | 1.019 | 20 | 823 | 16 | 823 | 16 | 792 | 16 | 791 | 16 | 5.080 | 915 | 18 | 915 | 18 | 915 | 18 |
| 3 | Cordillera | 5.902 | 1.413 | 24 | 1.416 | 24 | 1.414 | 24 | 1.265 | 21 | 1.265 | 21 | 1.175 | 20 | 1.176 | 20 | 5.751 | 1.377 | 24 | 1.377 | 24 | 1.374 | 24 |
| 4 | Guairá | 4.371 | 815 | 19 | 870 | 20 | 810 | 19 | 771 | 18 | 773 | 18 | 671 | 15 | 666 | 15 | 4.350 | 830 | 19 | 824 | 19 | 829 | 19 |
| 5 | Caaguazú | 11.716 | 2.514 | 21 | 2.530 | 22 | 2.392 | 20 | 2.142 | 18 | 2.137 | 18 | 1.956 | 17 | 1.954 | 17 | 11.669 | 2.245 | 19 | 2.254 | 19 | 2.252 | 19 |
| 6 | Caazapá | 4.348 | 772 | 18 | 779 | 18 | 781 | 18 | 692 | 16 | 694 | 16 | 669 | 15 | 663 | 15 | 4.322 | 772 | 18 | 772 | 18 | 772 | 18 |
| 7 | Itapúa | 12.530 | 2.472 | 20 | 2.459 | 20 | 2.457 | 20 | 2.036 | 16 | 2.039 | 16 | 2.005 | 16 | 2.009 | 16 | 12.443 | 2.370 | 19 | 2.355 | 19 | 2.371 | 19 |
| 8 | Misiones | 2.428 | 557 | 23 | 551 | 23 | 556 | 23 | 505 | 21 | 505 | 21 | 436 | 18 | 434 | 18 | 2.380 | 522 | 22 | 522 | 22 | 522 | 22 |
| 9 | Paraguarí | 4.553 | 943 | 21 | 955 | 21 | 943 | 21 | 865 | 19 | 865 | 19 | 735 | 16 | 735 | 16 | 4.628 | 1.031 | 22 | 1.031 | 22 | 1.031 | 22 |
| 10 | Alto Paraná | 16.617 | 4.088 | 25 | 4.132 | 25 | 4.034 | 24 | 2.942 | 18 | 2.953 | 18 | 2.963 | 18 | 2.967 | 18 | 16.597 | 3.285 | 20 | 3.300 | 20 | 3.343 | 20 |
| 11 | Central | 40.814 | 10.268 | 25 | 10.364 | 25 | 9.989 | 24 | 7.802 | 19 | 7.818 | 19 | 8.015 | 20 | 8.032 | 20 | 39.629 | 8.278 | 21 | 8.254 | 21 | 8.394 | 21 |
| 12 | Ñeembucú | 1.453 | 321 | 22 | 312 | 21 | 321 | 22 | 265 | 18 | 265 | 18 | 243 | 17 | 243 | 17 | 1.473 | 334 | 23 | 334 | 23 | 334 | 23 |
| 13 | Amambay | 3.571 | 985 | 28 | 995 | 28 | 898 | 25 | 747 | 21 | 746 | 21 | 823 | 23 | 821 | 23 | 3.540 | 706 | 20 | 707 | 20 | 717 | 20 |
| 14 | Canindeyú | 5.042 | 1.214 | 24 | 1.075 | 21 | 1.079 | 21 | 954 | 19 | 955 | 19 | 969 | 19 | 972 | 19 | 4.980 | 988 | 20 | 986 | 20 | 991 | 20 |
| 15 | Pte. Hayes | 2.816 | 695 | 25 | 642 | 23 | 668 | 24 | 444 | 16 | 481 | 17 | 502 | 18 | 498 | 18 | 2.738 | 502 | 18 | 468 | 17 | 504 | 18 |
| 16 | Boquerón | 1.432 | 380 | 27 | 398 | 28 | 353 | 25 | 286 | 20 | 293 | 20 | 319 | 22 | 316 | 22 | 1.386 | 305 | 22 | 318 | 23 | 316 | 23 |
| 17 | Alto Py | 398 | 150 | 38 | 146 | 37 | 168 | 42 | 116 | 29 | 118 | 30 | 98 | 25 | 97 | 24 | 380 | 144 | 38 | 144 | 38 | 139 | 37 |
| 18 | Capital | 7.797 | 2.616 | 34 | 2.718 | 35 | 2.431 | 31 | 1.822 | 23 | 1.848 | 24 | 1.997 | 26 | 2.023 | 26 | 8.430 | 1.999 | 24 | 1.975 | 23 | 2.062 | 24 |
| País | | 141.221 | 33.632 | 24 | 33.536 | 24 | 32.641 | 23 | 26.447 | 19 | 26.548 | 19 | 26.290 | 19 | 26.317 | 19 | 140.071 | 28.692 | 20 | 28.625 | 20 | 28.955 | 21 |

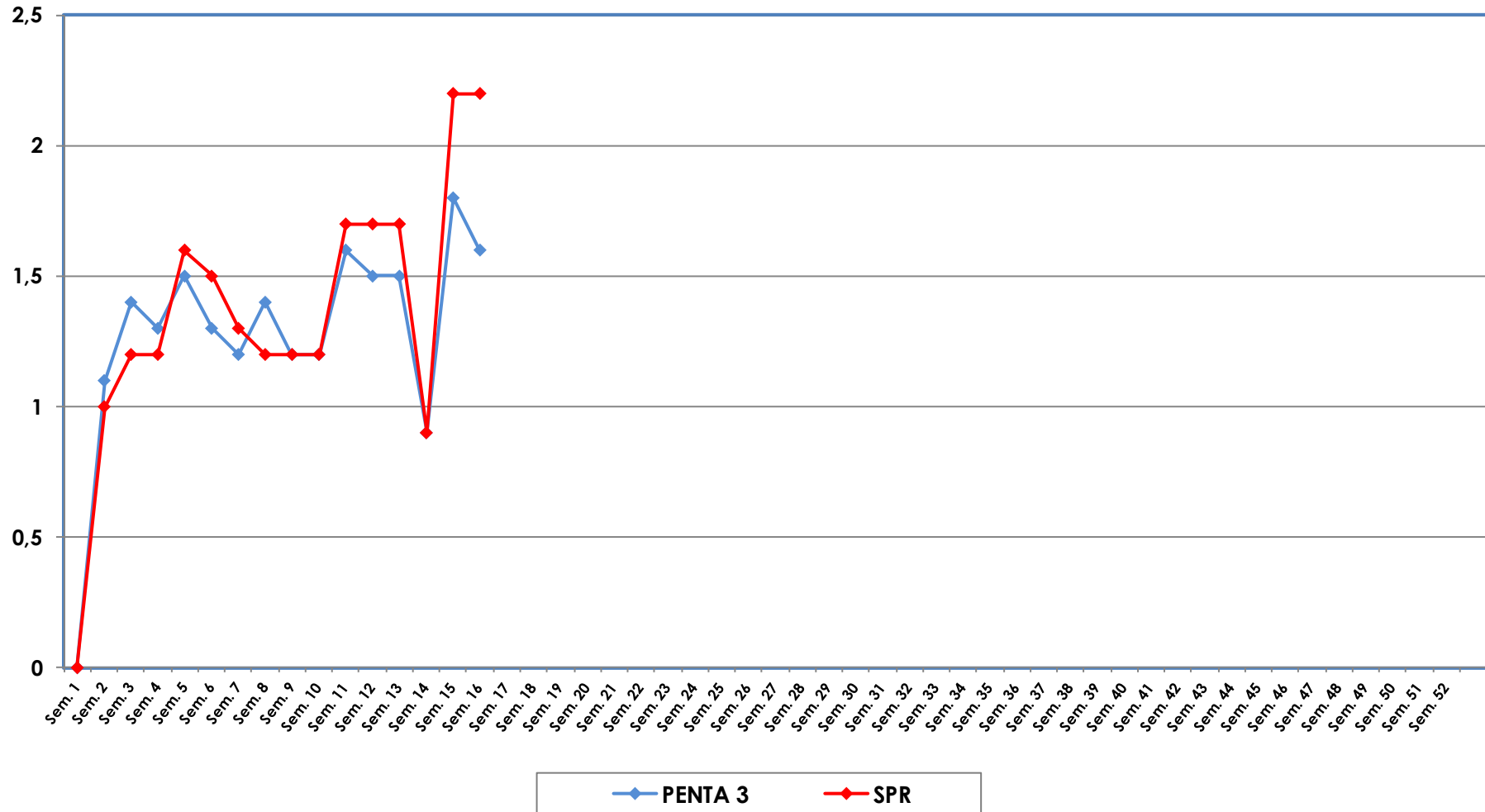
Fecha de Emisión: 18/04/2018

Hora: 18:20

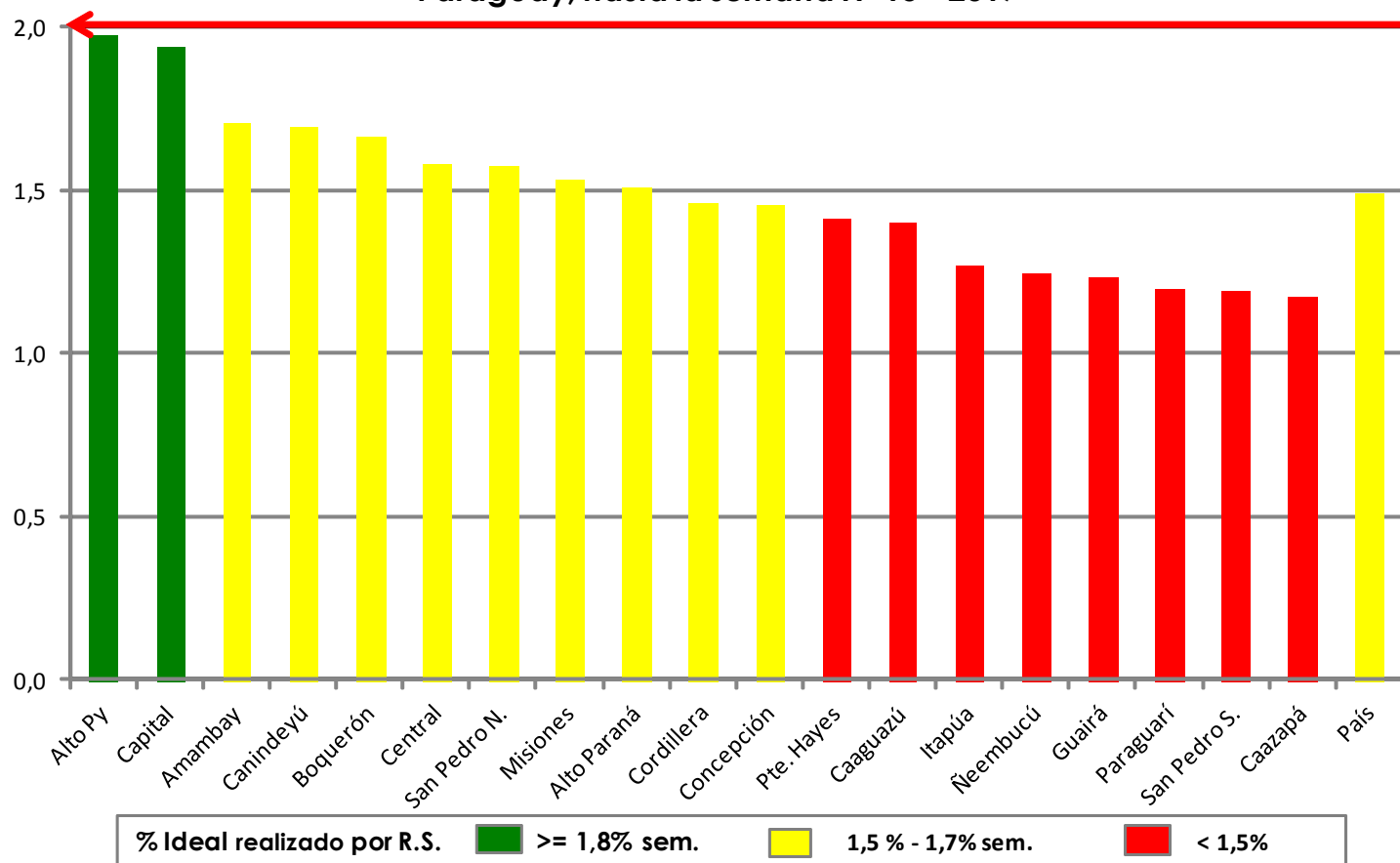
Fuente: Datos reportados al PAI-Visual - Sub-Sistema de Información de Coberturas del PAI

Avda. Venezuela c/ Tte. Insaurralde Tel. (021) 298-640 Asunción - Paraguay

**Gráfico 2. Monitoreo semanal de coberturas con Penta3 y SPR
Paraguay, hasta la semana 15-2018**



**Gráfico 3. Ranking de coberturas con Penta3.
Paraguay, hasta la semana N° 15 - 2017**



Fuente: Datos reportados al PAI-Visual - Sub-Sistema de Información de Coberturas del PAI

